



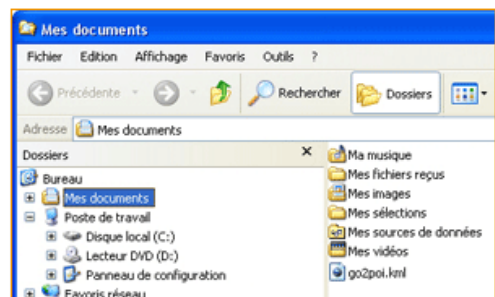
load your POI
step by step
in Google Earth

How to load easily POI in Google Earth, follow step by step the guide below :
(Click image to enlarge)

Step 1 : Download POI

Save the file corresponding to the POI you want to load into Google Earth (kml file).

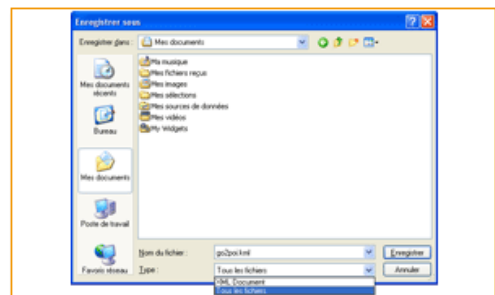
For this, click on the file link and choose a folder to save where you can easily remember. For example on your desktop, or in the folder "My Documents".



Step 2 : Check / Change file extension

Your Internet browser may save the kml file as a xml file

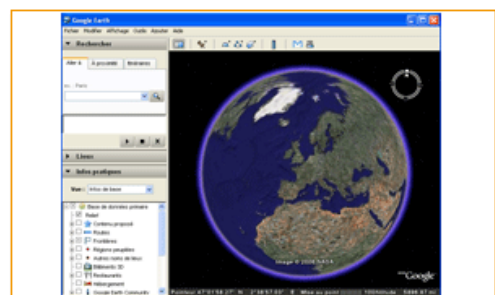
If so, change the extension of the file you downloaded to kml file



Step 3 : Launch Google Earth

Launch Google Earth, select the corresponding menu item in the Start menu

Note : If you do not find the icon of Google Earth, download from the Google Web site and install the application before continue.

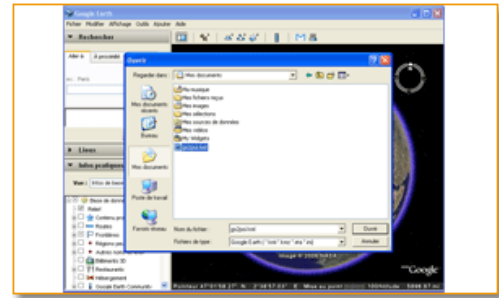


Step 4 : Load your POI in Google Earth

Select "Open..." item from the "File" menu of Google Earth to show the file selection dialog box.

Select The folder where you saved the POI file at the step 1 (kml file).

Select the file and submit by clicking on the "Open" button



Step 5 : View the POI in Google Earth

The POI are loaded in Google Earth and immediately visible.

You can use all the tools of Google Earth to see and manipulate the POI.

Note : After loading POI, Google Earth does a zoom level maximum that allows you to view all at the same time.

