



## POI Loader Guide for tomtom GPS

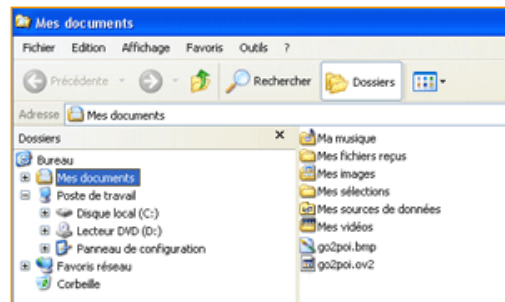
### load your POI step by step onto your tomtom GPS

How to load easily POI into tomtom GPS, follow step by step the guide below :  
(Click image to enlarge)

#### Step 1 : Download POI

Save the two files corresponding to the POI you want to load into your GPS (ov2 and bmp files).

For this, click on the file link and choose a folder to save where you can easily remember. For example on your desktop, or in the folder "My Documents".

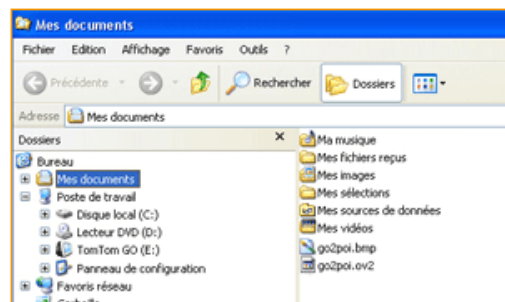


#### Step 2 : Connect your GPS to your computer

turn off your GPS, then plug it to your computer  
Once the connexion done, turn on your GPS.  
Your computer will automatically detect your GPS as a "Removable Disk"

Note : You can use the USB cable to connect your GPS

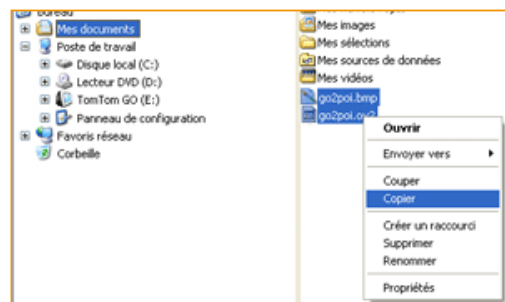
Warning : Do not unplug your GPS during the connection with computer



#### Step 3 : Copy the POI from your computer

Open the folder where you saved the ov2 and bmp files at step 1

Copy these two files

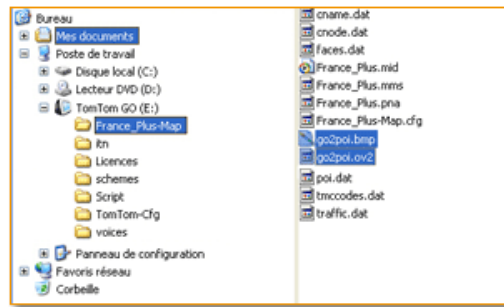


#### Step 4 : Paste the POI into your GPS

the "Removable Disk" may be 'TomTom GO'.

Select the folder of the maps

Paste the two POI files in the map folder



#### Step 5 : View the POI on your GPS

The POI are now loaded into your GPS.

You can turn off and unplug your GPS from your computer

To view the POI, turn on your GPS and select your categories of POI.

Note : even if you choose not to permanently display the POIs, you can reach them and find them near where you are.

